



# COMPONENT OVERVIEW 2020

**SCHLETTER**  
The Solar Mounting Group

## **General information**

### **Materials:**

Roof hooks and their main components:  
Highgrade steel with zinc flake coating,  
stainless steel 1.4301 or aluminium

Screws:  
Stainless steel A2 or better

Sheet metal parts:  
Stainless steel 1.4301 or aluminium.

Module clamps:  
Aluminium

Rubber seal:  
EPDM gasket (UV-resistant)

Deviating materials are described with the individual items.

### **Planning aid:**

Configuration and structural dimensioning with the  
Schletter Configurator.

### **Structural analysis:**

Static calculation according to the current country-specific standards (in Germany EN 1991, EC1). We comply with AS/NZS 1170 structural code of Australia/New Zealand. Structural analysis supplement for the dimensioning of the number of required fastening points, based on the structural analysis. Please make sure you observe the structural analysis information in each case! The verification of the adhesive force of the roof to the substructure is not included in the general structural analysis appendices!

Production-specific tolerances are to be considered with all dimension specifications.

On customer request, all companies of the Schletter Group can purchase goods from Schletter Germany and China (Shanghai). Both have been certified according to ISO 9001. Further details about the certifications are available on the respective Schletter websites.

# TABLE OF CONTENTS

## Component overview

|  |    |
|--|----|
| <b>Presentation</b>  |    |
| Brochures and software                                     | 06 |
| Sample case  | 07 |
| <b>Roof hooks</b>  |    |
| Standard roof hooks  | 10 |
| Rapid <sup>2+</sup> roof hooks                             | 11 |
| Roof hook accessories                                      | 11 |
| <b>Special fasteners</b>                                   |    |
| Special fasteners for roofs with steel substructure        | 14 |
| Special fasteners for roofs with wooden substructure       | 16 |
| Special fastener accessories                               | 17 |
| Sheet metal seam clamps                                    | 18 |
| System VarioFix / SingleFix / FixZ mounting kit / EcoRapid | 20 |
| Fix T-K  | 21 |
| <b>Module clamps</b>                                       |    |
| Module clamps for framed modules                           | 24 |
| Clamps for laminate modules                                | 25 |
| Laminate clamp accessories                                 | 27 |
| <b>Profiles</b>  |    |
| Module support and mounting profiles                       | 30 |
| Profile accessories  | 32 |
| <b>Supports</b>  |    |
| Flat roof system supports                                  | 36 |
| Special supports and facade supports                       | 36 |
| Support accessories  | 37 |
| <b>Load-optimized flat roof systems</b>                    |    |
| FixGrid  | 40 |
| FlatGrid   | 43 |
| <b>Trapezoidal and corrugated roofs</b>                    |    |
| Trapezoidal roofs  | 46 |
| Corrugated roofs   | 47 |
| <b>Screws and small parts</b>                              |    |
| Screws and small parts                                     | 50 |



# PRESENTATION

Brochures and Software

Sample case

# BROCHURES AND SOFTWARE

## Presentation



The latest brochures, product sheets, mounting instructions and further technical information as well as software can always be found in the download area of [www.schletter-group.com](http://www.schletter-group.com)

Upon request, we will also gladly send you our brochures in digital format.

# SAMPLE CASE

## Presentation



Similar illustration

Upon request!

---

**195000-297** Sample case of roof and standard systems  
Contains samples of major products of the  
Schletter mounting systems

---





# ROOF HOOKS

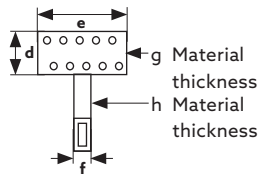
**Standard roof hooks**

**Rapid<sup>2+</sup> roof hooks**

**Roof hook accessories**

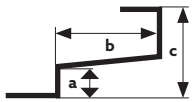
# STANDARD ROOF HOOKS

## Roof hooks



- All roof hooks made of stainless steel
- Adjustable hooks completely pre-assembled

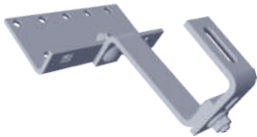
Wood screws, square head bolts (M10 x 25 mm) and flange nuts must be ordered separately.



Dimension drawing for the tables

## Universal roof hooks

- VA quality
- Variable bar arrangement
- Adjustable at the front and rear
- Center bar can be used in three positions

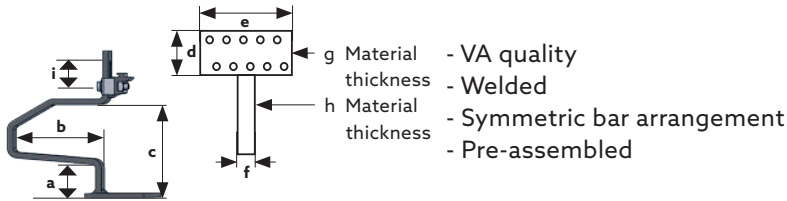


### 100001-000 Universal roof hooks (Frankfurt pantile or interlocking tiles)

|    | a     | b   | c       | d  | e   | f  | g | h |       |
|----|-------|-----|---------|----|-----|----|---|---|-------|
| mm | 42-52 | 115 | 102-135 | 74 | 150 | 30 | 5 | 6 | PU:20 |

# RAPID<sup>2+</sup> ROOF HOOKS

## Roof hooks



Dimensional drawing for the tables

- g Material thickness - VA quality
- Welded
- h Material thickness - Symmetric bar arrangement
- Pre-assembled



### 101001-000 Rapid<sup>2+</sup> roof hooks 45

|    | a  | b   | c   | d  | e   | f  | g | h | i  |       |
|----|----|-----|-----|----|-----|----|---|---|----|-------|
| mm | 45 | 110 | 118 | 60 | 150 | 35 | 5 | 6 | 30 | PU:20 |

Comparable to: Eco S 100004-000

# ROOF HOOK ACCESSORIES

## Roof hooks



**973000-017\*** EcoG / EcoS 2 mm shim / Rapid Standard PU:50

**973000-018\*** EcoG / EcoS 5 mm shim / Rapid Standard PU:50

Spacer for roof hook mounting

\* Products run out and will be replaced by a universal shim starting in Q2



# SPECIAL FASTENERS

Special fasteners for roofs with steel substructure

Special fasteners for roofs with wooden substructure

Special fastener accessories

Sheet metal seam clamps

System VarioFix / SingleFix / FixZ mounting kit / EcoRapid

Fix T-K

# SPECIAL FASTENERS FOR ROOFS WITH STEEL SUBSTRUCTURE

Roof cladding: Corrugated roofs & trapezoidal sheet



## Threaded screw, self-grooving, VA

|                            |        |
|----------------------------|--------|
| <b>943718-064*</b> 8 x 64  | PU:100 |
| <b>943718-100*</b> 8 x 100 | PU:100 |

\*Article expires. Available as long as stocks last.

+ adapter

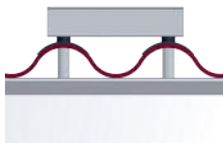
= ready to use  
Fastening systems



|  |       |
|--|-------|
| <b>119033-002</b> Uno M8 universal adapter                 | PU:50 |
| <b>119005-000</b> Seal cap for corrugated sheets 5 / 6 / 8 | PU:50 |
| <b>119004-002</b> Spacer sleeve AL 65 x 20*                | PU:50 |
| <b>119004-003</b> Spacer alu 995 x 20**                    | PU:30 |

\* for profile height 57 mm

\*\* for other profile heights, these must be cut to size at the construction site  
Rapid cross connectors (item 129063-000) must be ordered separately



|  |       |
|--|-------|
| <b>119033-005</b> Duo M8 universal adapter                 | PU:50 |
| <b>119005-000</b> Seal cap for corrugated sheets 5 / 6 / 8 | PU:50 |
| <b>119004-002</b> Spacer sleeve AL 65 x 20*                | PU:50 |
| <b>119004-003</b> Spacer alu 995 x 20**                    | PU:30 |

For each mounting point, 2 threaded screws must be calculated

\* for profile height 57 mm

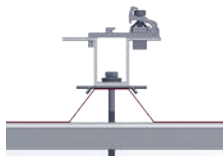
\*\* For other profile heights, these must be cut to size at the construction site

# SPECIAL FASTENERS FOR ROOFS WITH STEEL SUBSTRUCTURE

## Roof cladding: Corrugated roofs & trapezoidal sheet

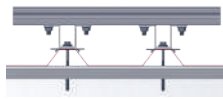
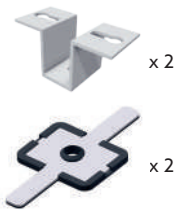
+ adapter

= ready to use  
Fastening systems



|  |       |
|--|-------|
| <b>119033-002</b> Uno M8 universal adapter       | PU:50 |
| <b>119005-001</b> Universal sphere cap with EPDM | PU:50 |

Rapid cross connectors (item 129063-000) must be ordered separately



|  |       |
|--|-------|
| <b>119033-002</b> Uno M8 universal adapter       | PU:50 |
| <b>119005-001</b> Universal sphere cap with EPDM | PU:50 |

For each mounting point, 2 threaded screws must be calculated

Additionally, the upper profile and the necessary mounting screws must be considered

# SPECIAL FASTENERS FOR ROOFS WITH WOODEN SUBSTRUCTURE

## Roof cladding: Corrugated roofs & trapezoidal sheet

For corrugated sheets (such as those of fiber cement) or trapezoidal sheet roofs, corrugated roof fastening sets consisting of a special hanger bolt with EPDM seal and a mounting plate are used. Please note that illustrations and thread lengths may vary!



### Hanger bolt

|                   |                                  |       |
|-------------------|----------------------------------|-------|
| <b>110010-200</b> | Hanger bolt set 10 x 200 mounted | PU:50 |
| <b>110012-200</b> | Hanger bolt set 12 x 200 mounted | PU:50 |
| <b>110012-300</b> | Hanger bolt set 12 x 300 mounted | PU:50 |

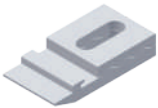
Hanger bolt set pre-assembled with vulcanized EPDM seal (UV resistant) and 3 flange nuts in V4A, mounted

+ adapter

= ready to use  
Fastening systems



|                   |  |       |
|-------------------|--|-------|
| <b>119002-000</b> | Mounting plate for hanger bolt M10 / M12<br>For hanger bolts M10 / M12, loose, aluminium 120 x 60 x 6 mm | PU:50 |
|-------------------|--|-------|



|                   |   |       |
|-------------------|---|-------|
| <b>119001-000</b> | KlickTop extension part for hanger bolt<br>For M10 / M12 hanger bolts, loose, aluminium | PU:50 |
|-------------------|---|-------|



|                   |   |       |
|-------------------|---|-------|
| <b>119033-004</b> | Universal adapter Duo M10 / M12<br>For M10 / M12 hanger bolts, loose, aluminium | PU:50 |
|-------------------|---|-------|



|                   |   |       |
|-------------------|---|-------|
| <b>119033-001</b> | Universal adapter Uno M10 / M12<br>For M10 / M12 hanger bolts, loose, aluminium | PU:50 |
|-------------------|---|-------|

Rapid cross connectors (item 129063-000) must be ordered separately



# SPECIAL FASTENER ACCESSORIES



## FixPlan - in connection with hanger bolts

The alternative for even sheet metal roofs where fastening on the seam is not possible (e.g. titanium zinc sheet roofs)

|   |        |
|---|--------|
| <b>114003-000</b> FixPlan sealing plate   | PU:50  |
| <b>114004-000</b> Bituplan additional seal for FixPlan<br>For mounting with bitumen coverings | PU:100 |



## SlatePlan for attachment with hanger bolts

SlatePlan can be used on roofs with shingle covers, such as from bitumen, fiber cement or slate, for connection by hanger bolt systems.

|  |       |
|--|-------|
| <b>109017-000</b> SlatePlan with seal 270 x 200 x 0.5 mm | PU:50 |
| <b>109017-001</b> SlatePlan with seal 370 x 200 x 0.5 mm | PU:50 |

# SHEET METAL SEAM CLAMPS

## Special fasteners

Please note: The tightening torque must be limited so that the sheet metal seam does not become distorted and the thermal expansion of the sheets is not prevented!



---

|   |       |
|---|-------|
| <b>112001-000</b> Seam clamp 503 VA for standing seam roof  | PU:50 |
| Please note: For titanium zinc sheets, it must be checked whether the standing seams can be loaded! |       |

---



|  |       |
|--|-------|
| <b>112001-005</b> Folding clamp 503 Rapid for standing seam roof | PU:50 |
|--|-------|

---



---

|  |       |
|--|-------|
| <b>112003-003</b> Seam clamp 520 Rapid Zambelli RibRoof465 and similar | PU:50 |
|--|-------|

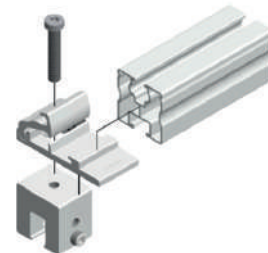
---



---

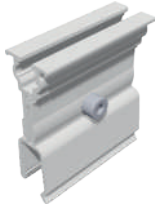
|  |        |
|--|--------|
| <b>109008-004</b> RapFix to connect to seam clamps with an M8 bolt. Hardware included. | PU:200 |
|--|--------|

---



# SHEET METAL SEAM CLAMPS

## Special fasteners



---

**112004-002** Folding clamp 522 AL Rapid Zambelli RibRoof500 and similar PU:50

---



---

**112006-002** Seam clamp 524 Rapid Fischer KlipTec and similar PU:50

---



---

**112012-002** Seam clamp 540 AL KK for KlipLok 700 / 406  
for KlipLok 700 HiStrength, Classic 700 / 406 and similar PU:50

---

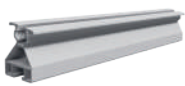
# SYSTEM VARIOFIX / SINGLEFIX / FIXZ MOUNTING KIT / ECORAPID

## Special fasteners

The universal trapezoidal sheet fastener for steel and aluminium sheet from 0.5 mm. Pay special attention to the usage notes!

+ Profile

= Mounting kit



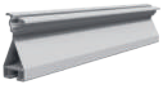
**121010-202** FixZ-7 system profile18 lower 450 mm

PU:25



**121001-202** FixZ-7 upper system profile18 450 mm

PU:25



**121009-202** FixZ-15 system profile18 lower 450 mm

PU:25

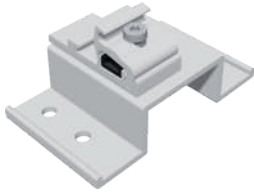


**121008-202** FixZ-15 upper system profile18 450 mm

PU:25

# FIX T-K

## Special fasteners



The innovative fastener for bitumen roofs on wood casings

---

**119014-012** Fix T-K, connect to the rafter, hardware not included,  
EPDM sold separately.

---

PU:50



# MODULE CLAMPS

Module clamps for framed modules

Clamps for laminate modules

Laminate clamp accessories

# MODULE CLAMPS FOR FRAMED MODULES

## Module clamps

### Rapid16 AL module clamp system

Clamping length: 100 mm



| AL blank          | Black anodized item designation | Installation type   |
|-------------------|---------------------------------|---------------------|
| <b>131121-111</b> | Middle clamp Rapid16 30 - 40 L  | <b>V + H</b> PU:100 |



|                   |                                |                     |
|-------------------|--------------------------------|---------------------|
| <b>131121-112</b> | Middle clamp Rapid16 40 - 50 L | <b>V + H</b> PU:100 |
|-------------------|--------------------------------|---------------------|



|                   |   |                |
|-------------------|---|----------------|
| <b>131101-101</b> | <b>131101-191</b> End clamp Rapid16 30 - 40 L | <b>V</b> PU:50 |
|-------------------|---|----------------|



|                   |   |                    |
|-------------------|---|--------------------|
| <b>131101-102</b> | <b>131101-192</b> End clamp Rapid16 40 - 50 L | <b>V + H</b> PU:50 |
|-------------------|---|--------------------|



|                   |   |                |
|-------------------|---|----------------|
| <b>131101-103</b> | <b>131101-193</b> End clamp Rapid16 H 30 - 40 L | <b>H</b> PU:50 |
|-------------------|---|----------------|



# CLAMPS FOR LAMINATE MODULES

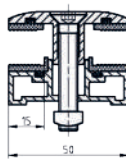
## Module clamps

### Profi and Eco laminate series

For various module thicknesses  
Attention: Note the tightening torque!

### Profi laminate series

for laminate thicknesses 3-14 mm  
Glass inset: Profi wide 15 mm  
Length: 80 mm, clearance between modules: approx. 20 mm  
Incl. countersunk screw and square nut



---

|  |        |
|--|--------|
| <b>132202-308</b> Profi middle clamp wide 3-8 mm set | PU:200 |
|--|--------|

---



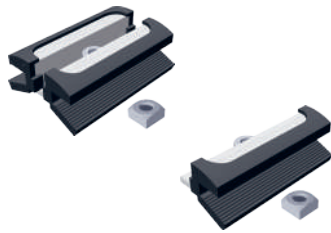
---

|   |        |
|---|--------|
| <b>132102-308</b> Profi end clamp wide 3-8 mm set | PU:200 |
|---|--------|

---

# CLAMPS FOR LAMINATE MODULES

## Module clamps



### Eco laminate series

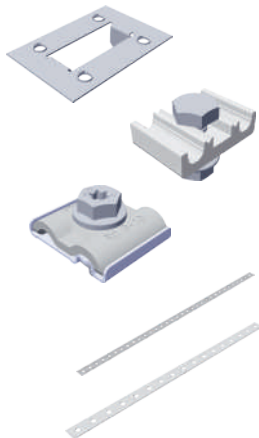
Length of aluminium clamp: 70 mm, glass inset: 11 mm, clearance between modules. 22 mm, (no compression of the laminate)

|  |        |
|--|--------|
| <b>133264-168</b> Eco6-S4 middle clamp laminate 6.8 mm set | PU:100 |
| <b>133164-168</b> Eco6-S4 end clamp laminate 6.8 mm set    | PU:100 |

With M8 x 20 accessories, without click-in component

With aluminum clamp surrounding EPDM rubber

Certified clamps for First Solar series 4 modules made of highly insulated EPDM rubber material. The certification can be found in the download area at [www.schletter-group.com](http://www.schletter-group.com)

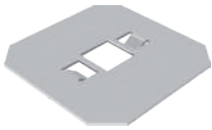


### Lightning protection and potential equalization

|  |        |
|--|--------|
| <b>135004-002</b> Ground plate<br>for module grounding, not for laminate clamps!   | PU:100 |
| <b>135003-000</b> Lightning protection clamp for 8 mm<br>AL completely pre-assembled (for DM 8 mm wiring)  | PU:20  |
| <b>135003-002</b> Grounding and lightning protection clamp VA M8<br>Clamping range Rd 8-10 mm<br>Connection single / multi-wire 4-50 mm <sup>2</sup> | PU:20  |
| <b>119015-002</b> Punched mounting tape 6-50 m   |        |
| <b>119015-003</b> Punched mounting tape 16-50 m<br>lightning resistant   |        |

# LAMINATE CLAMP ACCESSORIES

## Module clamps



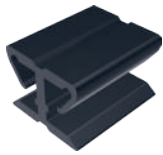
AL blank

---

**139004-000** Bearing plate for Eco module clamp  
For raising the bearing surface

---

PU:200



---

**973000-012** Spacer

For laminate thicknesses 4-10 mm

---

PU:100



---

AL blank

**139008-006** Safety hooks, laminate 3-8 mm

---

PU:100



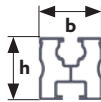
# PROFILES

Module support and mounting profiles

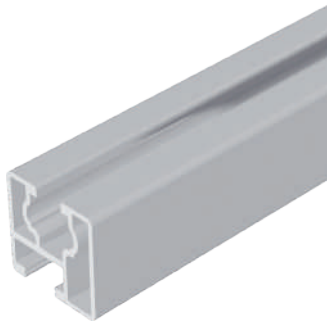
Profile accessories

# MODULE SUPPORT AND MOUNTING PROFILES

## Profiles



The series for the proven click system with the right accessories  
Mounting with square nut, click system and Rapid<sup>2+</sup>



For small spans

### Module support profile Eco05

Mechanical connection

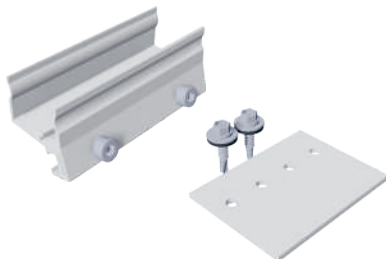
Upper: KlickNut M8

Lower: Screw channel M10

| b     | h     |
|-------|-------|
| 30 mm | 30 mm |

AL blank

|                     |       |
|---------------------|-------|
| <b>120001-04200</b> | 4.2 m |
|---------------------|-------|

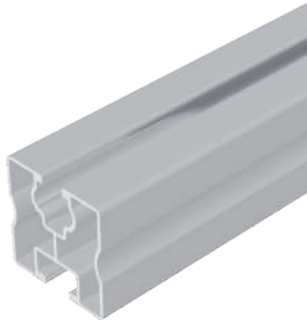


#### Connectors

|                   |   |        |
|-------------------|---|--------|
| <b>129002-002</b> | Connector E Solo, SoloPlus,<br>FixZ-7, FixZ-15, pre-assembled | PU:100 |
| <b>129019-001</b> | Additional connector for FixZ-15 upper set                    | PU:100 |

# MODULE SUPPORT AND MOUNTING PROFILES

## Profiles



### Module support profile Solo

| b     | h     |
|-------|-------|
| 40 mm | 40 mm |

Mechanical connection

Upper: KlickNut M8  
Lower: Screw channel M10

| AL blank            |       | Black anodized      |       |
|---------------------|-------|---------------------|-------|
| <b>120005-04200</b> | 4.2 m | <b>120005-94200</b> | 4.2 m |
| <b>120005-04300</b> | 4.3 m |                     |       |
| <b>120005-06200</b> | 6.2 m |                     |       |
| <b>120005-06300</b> | 6.3 m |                     |       |



### Module support profile SoloPlus

| b     | h     |
|-------|-------|
| 40 mm | 60 mm |

Mechanical connection

Upper: KlickNut M8  
Lower: Screw channel M10

| AL blank            |       |  |  |
|---------------------|-------|--|--|
| <b>120006-04200</b> | 4.2 m |  |  |
| <b>120006-06200</b> | 6.2 m |  |  |



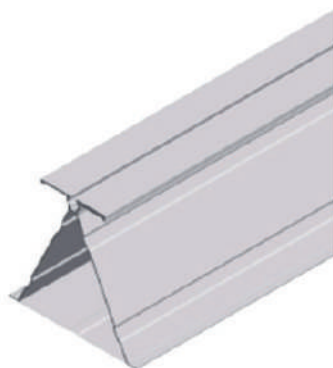
### Module support profile S -Series: Parapet to Parapet

| b      | h      |
|--------|--------|
| 160 mm | 125 mm |

Mechanical connection

Upper: KlickNut M8

| AL blank            |     |       |
|---------------------|-----|-------|
| <b>124305-04200</b> | S 3 | 4.2 m |
| <b>124305-06200</b> | S 3 | 6.2 m |



| b      | h      |
|--------|--------|
| 200 mm | 187 mm |

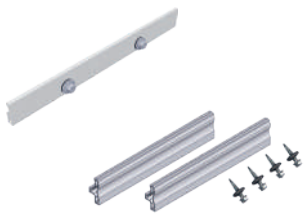
| AL blank            |     |       |
|---------------------|-----|-------|
| <b>124306-04200</b> | S 4 | 4.2 m |
| <b>124306-06200</b> | S 4 | 6.2 m |

# PROFILE ACCESSORIES

## Profiles



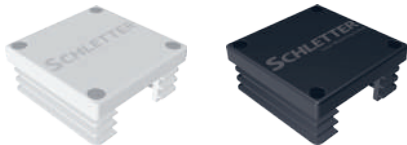
|                   |   |        |
|-------------------|---|--------|
| <b>129001-003</b> | E Eco connector, pre-assembled                            | PU:100 |
| <b>129002-002</b> | E Solo, SoloPlus connector FixZ-7, FixZ-15, pre-assembled | PU:100 |



|                   |                             |       |
|-------------------|-----------------------------|-------|
| <b>129001-004</b> | Eco internal connector set  | PU:50 |
| <b>129060-001</b> | Solo slide-in connector set | PU:50 |



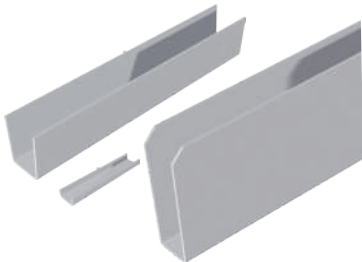
| AL blank          | Black anodized    |   |        |
|-------------------|-------------------|---|--------|
| <b>129063-000</b> | <b>129063-900</b> | Rapid cross connector<br>Completely pre-assembled for Klicknut M8<br>for cross rail system<br>See Rapid cross connector product sheet | PU:200 |



| Grey              | Black             |                      |        |
|-------------------|-------------------|----------------------|--------|
| <b>129011-000</b> | <b>129011-900</b> | Solo plastic end cap | PU:100 |



|                   |                     |       |
|-------------------|---------------------|-------|
| <b>129061-001</b> | Ridge connector set | PU:50 |
|-------------------|---------------------|-------|



|                   |                             |       |
|-------------------|-----------------------------|-------|
| <b>129001-007</b> | SoloPlus internal connector | PU:25 |
|-------------------|-----------------------------|-------|



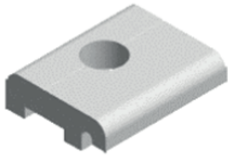
|                   |                          |       |
|-------------------|--------------------------|-------|
| <b>119033-002</b> | Uno M8 universal adapter | PU:50 |
|-------------------|--------------------------|-------|

As clamp dowel for special applications in connection with the Eco05 module support profile the profile must be fastened with M8 screws to the clamp dowel



# PROFILE ACCESSORIES

## Profiles



---

**141006-000** Mounting Clamp, Locking, 40mm  
Used for connecting S-rails to roof parapet,  
steel beam or other structures.  
12 mm hole. Hardware not included.

---

PU:500





# SUPPORTS

Flat roof system supports

Special supports and facade supports

Support accessories

# FLAT ROOF SYSTEM SUPPORTS

## Supports

For all types of flat roof fasteners, depending on the substrate and fastener, diagonal reinforcement of the support units may be useful.

If necessary, these reinforcements can be built on site, e.g. using our punched mounting tape 16-50 m 119015-003.

Other angles 15°-60° in 5° increments possible.



### Support, 30° angle other angles 15°-60° in 5° increments possible

| Flat roof support Light U (30 degree, AL, screwed) |                 |         |         |    |    |
|--|-----------------|---------|---------|----|----|
| Flex Console                                       | Module height   | a       | b       | c  | d  |
| 150101-150   | approx. 1500 mm | 1445 mm | 1193 mm | -- | -- |

# SPECIAL SUPPORTS AND FACADE SUPPORTS

## Supports



Facade supports for modules 1.3-1.6 m  
Angles of 30°-75° in 5° increments possible

For choosing the support angle, please indicate the module inclination to the horizontal

| Facade supports |  |         |         |
|-----------------|--|---------|---------|
|                 | Module height  | a       | b       |
| 156001-160      | Facade support for modules 1.3-1.6m<br>approx. 1.3-1.6 m | 1285 mm | 1323 mm |

# SUPPORT ACCESSORIES

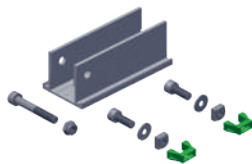
## Supports

### SolRack accessories

(2 units per plate required!)

|   |        |
|---|--------|
| <b>943610-025</b> Screw M10 x 25 hexagonal DIN933 A2 GMB                            | PU:100 |
| <b>943922-010</b> Large washer M10 DIN9021 A2                                       | PU:100 |
| <b>943912-010</b> Flange nut M10 with locking teeth, large base for 12mm wide slot. | PU:100 |

When putting systems together, the fitting sets must be considered when ordering. The mounting material is provided for M8 click channels.



|  |        |
|--|--------|
| <b>159000-002</b> Fitting set 07 for CompactVario, simple<br>For assembly of upper support parts on profiles,<br>such as profile family 05 | PU:100 |
|--|--------|



# LOAD-OPTIMIZED FLAT ROOF SYSTEMS

FixGrid

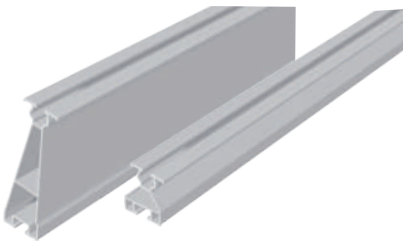
FlatGrid

# FIXGRID

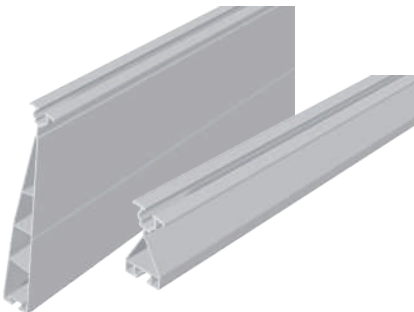
## Load-optimized flat roof systems



| FixGrid18         |                                  |
|-------------------|----------------------------------|
| <b>163000-201</b> | FixGrid18 100 kit 6° set of 2    |
| <b>163000-202</b> | FixGrid18 100 kit 6° set of 3    |
| <b>163000-203</b> | FixGrid18 100 Kit 13° set of 2   |
| <b>163000-204</b> | FixGrid18 100 kit 13° set of 3   |
| <b>163000-301</b> | FixGrid18 South kit 6° set of 2  |
| <b>163000-302</b> | FixGrid18 South kit 6° set of 3  |
| <b>163000-303</b> | FixGrid18 South kit 13° set of 2 |
| <b>163000-304</b> | FixGrid18 South kit 13° set of 3 |



| FixZ-7              |                                     |
|---------------------|-------------------------------------|
| <b>121001-04200</b> | FixZ-7 Upper system profile 4300 mm |
| <b>121010-04200</b> | FixZ-7 Lower system profile 4300 mm |



| FixZ-15             |                                      |
|---------------------|--------------------------------------|
| <b>121008-04200</b> | FixZ-15 Upper system profile 4300 mm |
| <b>121009-04200</b> | FixZ-15 Lower system profile 4300 mm |



## FlatGrid

| FlatGrid          |                                   |
|-------------------|-----------------------------------|
| <b>128039-214</b> | Base profile for FlatGrid 4200 mm |
| <b>128039-215</b> | Base profile for FlatGrid 6300 mm |



# FIXGRID

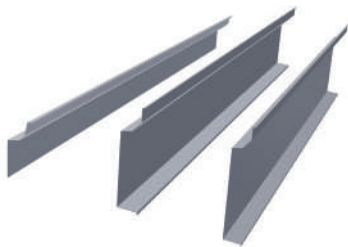
## Load-optimized flat roof systems



### FixZ profile pieces incl. FixGrid screw-in connector

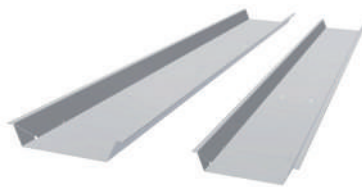
|                   |  |       |
|-------------------|--|-------|
| <b>163900-011</b> | FixZ-7 upper system profile 96 mm with connector   | PU:25 |
| <b>163900-012</b> | FixZ-7 lower system profile 96 mm with connector   | PU:25 |
| <b>163900-001</b> | FixZ-15 upper system profile 96 mm with connector  | PU:25 |
| <b>163900-002</b> | FixZ-15 lower system profile 96 mm with connector  | PU:25 |
| <b>163900-003</b> | FixZ-15 center system profile 96 mm with connector | PU:25 |

For high snow loads up to 5.4 kN / m<sup>2</sup>



### FixZ-7 Windsafe

|                   |                                |
|-------------------|--------------------------------|
| <b>169018-170</b> | FixZ-7 Windsafe up to 1700 mm  |
| <b>169018-210</b> | FixZ-7 Windsafe up to 2067 mm  |
| <b>169019-170</b> | FixZ-15 Windsafe up to 1700 mm |
| <b>169019-210</b> | FixZ-15 Windsafe up to 2067 mm |



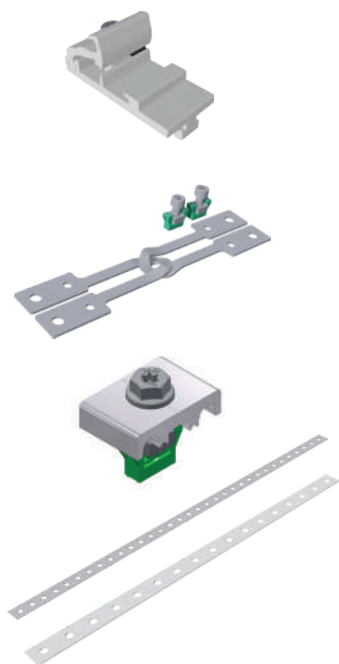
### Ballast trays

|                   |                                       |
|-------------------|---------------------------------------|
| <b>169020-170</b> | FixGrid ballast shaft18 up to 1700 mm |
| <b>169020-210</b> | FixGrid ballast shaft18 up to 2067 mm |

The appropriate module clamps can be found in the module clamps section

# FIXGRID

## Load-optimized flat roof systems

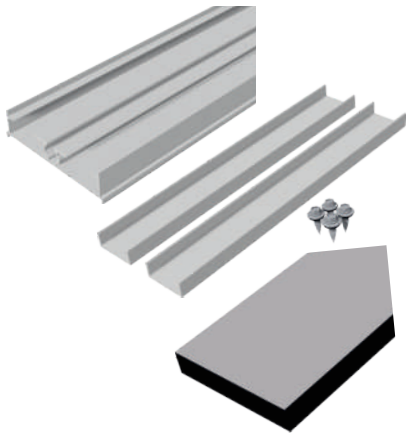


| Other accessories |                               |        |
|-------------------|-------------------------------|--------|
| <b>129063-000</b> | Rapid cross connector         | PU:200 |
| <b>129062-001</b> | Tension connector set M8      | PU:100 |
| <b>135003-005</b> | Lightning protection clamp M8 | PU:25  |
| <b>119015-002</b> | Punched mounting tape 6-50 m  |        |
| <b>119015-003</b> | Punched mounting tape 16-50 m |        |

The appropriate module clamps can be found in the module clamps section, and the module support profiles in the profiles section

# FLATGRID

## Load-optimized flat roof systems



### Base profile FlatGrid for structure protection strips

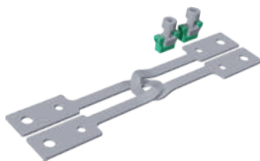
|                   |   |       |
|-------------------|---|-------|
| <b>128039-214</b> | Base profile for FlatGrid 4200 m        |       |
| <b>128039-215</b> | Base profile for FlatGrid 6300 m        |       |
| <b>129078-000</b> | Internal connector for FlatGrid set     | PU:25 |
| <b>169004-003</b> | Surface protect.mat 300x110x20mm SK cut | PU:25 |
| <b>169004-008</b> | Surface protect.mat 300x110x20FH SK cut | PU:25 |

(On request, please note longer delivery time)



### Rapid2+ L bracket connector and accessories

|                   |                            |        |
|-------------------|----------------------------|--------|
| <b>119026-001</b> | Rapid2+ L bracket          | PU:100 |
| <b>943308-120</b> | Allen screw M8 x 20        | PU:100 |
| <b>943922-008</b> | Washer M8                  | PU:100 |
| <b>943914-008</b> | Square nut M8              | PU:100 |
| <b>129010-008</b> | Click-in module for nut M8 | PU:100 |



### Other accessories

|                   |  |        |
|-------------------|--|--------|
| <b>129062-001</b> | Tension connector set M8               | PU:100 |
| <b>169017-000</b> | Additional tray                        | PU:50  |
| <b>169004-007</b> | Structure protection mat 230 x 200 x 6 |        |





# TRAPEZOIDAL AND CORRUGATED ROOFS

Trapezoidal roofs

Corrugated roofs

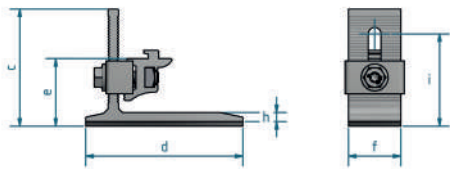
# TRAPEZOIDAL ROOFS



## Rapid2+ SML

**119026-101** Rapid2+ SML roof hooks PU:20

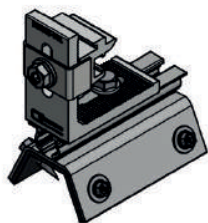
|    | a | b | c  | d   | e  | f  | g | h | i  |
|----|---|---|----|-----|----|----|---|---|----|
| mm |   |   | 78 | 105 | 45 | 35 |   | 6 | 29 |



## KingFix2000 KT Kit - 113002-007

**113002-005** KingFix2000

**129063-000** Rapid cross bracing connector Kit



## KingFix2000 EMU Kit - 113002-006

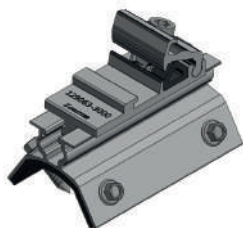
**113002-005** KingFix2000

**119026-001** Rapid2+ L

**129010-008** KlickIn for M8

**943914-008** Nut M8 4KANT DIN557 A4

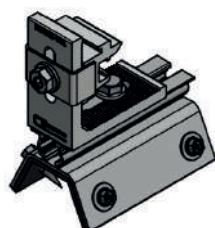
**943000-907** Screw M8x20 DIN 6921 A2 GMB



## TrimFix2000 KT Kit - 113002-004

**113002-002** TrimFix2000

**129063-000** Rapid cross bracing connector Kit



## TrimFix2000 EMU Kit - 113002-003

**113002-002** TrimFix2000

**119026-001** Rapid2+ L

**129010-008** KlickIn for M8

**943914-008** Nut M8 4KANT DIN557 A4

**943000-907** Screw M8x20 DIN 6921 A2 GMB

# TRAPEZOIDAL ROOFS

SingleFix-V Solo

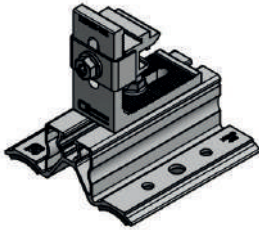


---

**113009-103** SingleFix-V Solo 20-pair set for corrugation heights from 22 mm PU:50  
(2 x SingleFix-V Solo, 4 sheet metal screws)  
Used in connection with Solo mounting rails, for example

---

# CORRUGATED ROOFS



## FixW EMU with 6 holes - 111013-444

---

**111013-002** FixW-1876  
**119026-001** Rapid2+ L  
**943914-008** Nut M8 4KANT DIN557 A4  
**129010-008** KlickIn for M8  
**943000-907** Screw M8x20 DIN 6921 A2 GMB  
**973000-013** EPDM rubber strips

---





# SCREWS AND SMALL PARTS

Screws and small parts

# SCREWS AND SMALL PARTS

## Screws and small parts



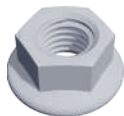
### Hexagon screw, VA

|                            |        |
|----------------------------|--------|
| <b>943610-025</b> M10 x 25 | PU:100 |
|----------------------------|--------|



### Square head screw, VA

|                            |        |
|----------------------------|--------|
| <b>943410-025</b> M10 x 25 | PU:100 |
|----------------------------|--------|



### Flange nut with locking teeth

|                       |        |
|-----------------------|--------|
| <b>943912-008</b> M8  | PU:100 |
| <b>943912-010</b> M10 | PU:100 |



### Washer large, VA

|                       |        |
|-----------------------|--------|
| <b>943922-008</b> M8  | PU:100 |
| <b>943922-010</b> M10 | PU:100 |



### Allen screw

|   |        |
|---|--------|
| <b>943308-120</b> M8 x 20 bottom gear teeth | PU:100 |
| <b>943308-125</b> M8 x 25 bottom gear teeth | PU:100 |

# SCREWS AND SMALL PARTS

## Screws and small parts



|  |        |
|--|--------|
| <b>943914-008</b> Square nut M8, V4A<br>Fits all Schletter system profiles, can be combined with M8 Klickn klick component | PU:100 |
|--|--------|

|  |        |
|--|--------|
| <b>129010-008</b> Klickn klick module for nut M8<br>For simplified insertion of the M8 square nut at any location on the KlickIn groove of the rails and fasteners | PU:100 |
|--|--------|

|                                       |        |
|---------------------------------------|--------|
| <b>943914-010</b> Square nut M10, V4A | PU:100 |
|---------------------------------------|--------|

|  |        |
|--|--------|
| <b>943914-108</b> Special square nut M8, V4A (shape as in M10)<br>Fits all Schletter system profiles, can be combined with M10 Klickn klick components | PU:100 |
|--|--------|

|  |        |
|--|--------|
| <b>129010-001</b> Klickn klick module for nut M10<br>For simplified insertion of the M10 square nut at any location on the KlickIn groove of the rails | PU:100 |
|--|--------|

### Threaded screw, self-grooving, VA

For steel starting at 1.5 mm



|                           |        |
|---------------------------|--------|
| <b>943718-064*</b> 8 x 64 | PU:100 |
|---------------------------|--------|

|                            |       |
|----------------------------|-------|
| <b>943718-100*</b> 8 x 100 | PU:50 |
|----------------------------|-------|

\*Article expires. Available as long as stocks last.

# SCREWS AND SMALL PARTS

## Screws and small parts



### Fastening screws for metal components and plates

|                   |  |        |
|-------------------|--|--------|
| <b>943755-925</b> | Drill screw 5.5 x 25 with gasket               | PU:100 |
| <b>943000-360</b> | Thin sheet metal screw 6.0 x 25 A2 with gasket | PU:100 |

|                   |   |        |
|-------------------|---|--------|
| <b>943772-019</b> | Repair screw 7.2 x 19 self-grooving FABA-A A2 | PU:500 |
|-------------------|---|--------|

### Wood screw

For non-boarded roofs, we recommend at least 80 mm

### Wood screw with plate head, VA



Example

|                   |         |        |
|-------------------|---------|--------|
| <b>943208-080</b> | 8 x 80  | PU:100 |
| <b>943208-100</b> | 8 x 100 | PU:100 |

### Seal for plate head screws



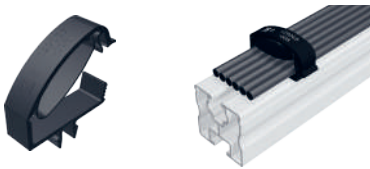
|                   |  |
|-------------------|--|
| <b>119016-000</b> | Seal for wafer-head screws diam 8 EPDM |
|-------------------|--|

# SCREWS AND SMALL PARTS

## Screws and small parts

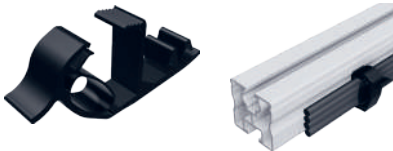
### Cable routing

Cable fastener made of UV- and temperature-resistant plastic



#### 129065-008 Proklip-Multi 8

| Profiles  | Systems   | Cable quantity    |
|---|---|-------------------|
| Klick or screw channel M8, module support profile S, module support profiles Solo, Eco05, FixZ-7, FixZ-15 | FixZ-7, FixZ-15, system FS, carport, special projects | approx. 6* PU:100 |



#### 129065-001 Proklip-Multi 10S

| Profiles                   | Systems | Cable quantity    |
|----------------------------|---------|-------------------|
| Solo and screw channel M10 | -       | approx. 4* PU:100 |



#### 149023-001 Mounting clips 1.0–3.0 mm, upper guide

Fastening on edges with a width of 1.0–3.0 mm; cable tie length: Cable tie length: 200 mm PU:100



#### 149023-003 Mounting clips 1.0–3.0 mm, lateral guide

Fastening on edges with a width of 1.0–3.0 mm; cable tie length: Cable tie length: 200 mm PU:100

\* Starting with a 6 mm<sup>2</sup> cable with a 6 mm cable diameter





For competent and comprehensive advice in planning your system, and for questions about logistics and order processing, our employees are gladly available to you.

**SCHLETTER**  
*The Solar Mounting Group*

SCHLETTER AUSTRALIA PTY LTD  
Unit 4, 27 Williamson Road  
NSW 2565 Ingleburn  
AUSTRALIA

Tel. No. +612 9426 7800  
[www.schletter-group.com](http://www.schletter-group.com)

We reserve the right to changes, including technical modification.