

**SCHLETTER**  
*The Solar Mounting Group*

**THE SCHLETTER  
GROUP - YOUR  
STRONG PARTNER  
FOR SOLAR  
MOUNTING  
SYSTEMS**

# YOUR STRONG PARTNER FOR SOLAR MOUNTING SYSTEMS

---





# OUR GLOBAL FOOTPRINT



GERMANY

ITALY

TURKEY

MENA

INDIA

SOUTH AFRICA

KOREA

CHINA

VIETNAM

PHILIPPINES

AUSTRALIA

JAPAN

# WE SET QUALITY STANDARDS AROUND **THE** **GLOBE.**

The Schletter Group is one of the world's leading manufacturers of solar mounting systems. We develop and manufacture aluminium and steel mounting systems for solar farms, flat roofs and pitched roofs. Our sophisticated solutions deliver supreme quality and durability - wherever the sun shines.

For over 50 years the name Schletter has stood for first class quality in metal processing - from its humble beginnings as a family-owned enterprise to its current status as a global group of companies. With more than 600 employees, production facilities in both Germany and China and a global network of distribution and service companies; we are today one of the leading manufacturers of solar mounting systems. Our plants and systems are installed all over the world.



# TRADITION & INNOVATION

What remains consistent are the quality standards and innovativeness of a company that has learned its trade from the bottom up and that has successfully industrialised. At the Schletter Group 60 design engineers around the world work on further developing our products. As standard, we only use the highest quality materials and go a step further than most of our competitors when it comes to corrosion protection, strength and durability. Therefore our systems can cope in even the toughest conditions, be they extreme wind loads in hurricane areas, tremors in earthquake zones or a corrosive maritime climate.

# OUR TEAM: QUALIFIED, DOWN TO EARTH, INTERNATIONAL

Our employees are the foundation to our success. We employ our engineers, metalworkers, service and sales professionals from more than a dozen nations around the world. As a global team they combine their skills, local knowledge and international diversity to generate a unique synergy that sets us apart from would-be competitors. This strength is undisputable and unmistakable.







**32 GW**

**1 GW**

**2019**

**2007**

# EXCEPTIONAL QUALITY: OUR PRODUCTS

When designing and manufacturing our solar mounting systems, we are not just thinking about sunshine. We are thinking about storms, heavy rainfall, snow loads and earthquakes. After all, these are the extreme stresses that a PV system must endure in all situations for 25 years or more. The result is relentless focus on quality; from product development to the finished product, for which we only use high grade aluminium and steel. This quality standard is the reason why Schletter mounting systems are known around the world for their reliability.







For large-scale projects, we take on the entire project management if required. In other words, we plan, calculate and install turnkey photovoltaic systems - worldwide.

# EXTREMELY ROBUST, SIMPLE TO INSTALL - FOR ANY TERRAIN

Solar parks represent an investment in the future for operators and investors alike. The success of the investment stands or falls on the quality of the mounting system. After all, it depends on the mounting system whether the solar plant achieves its planned running time in all weathers without disruption. Schletter ground-mounted systems have a high load capacity, are durable, require low maintenance and have been proven throughout the world in the toughest conditions.

## FS UNO

(Single post) - vertical

## FS DUO

(Double post) - vertical

## FS DUO 100

(Double post) - east/west

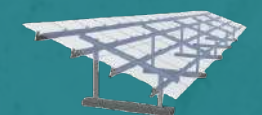
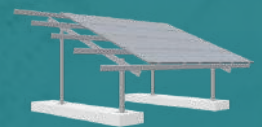
## FS UNO/DUO R - RAFTER SYSTEM

(Single post/Double post) - horizontal

## PVMAX-S

(Concrete foundation)

## PVMAX ENERGY KIT





## ROOF-PARALLEL MOUNTING

SCHLETTER STANDARD

GRIDNORM

FIXING SYSTEMS TILED ROOF

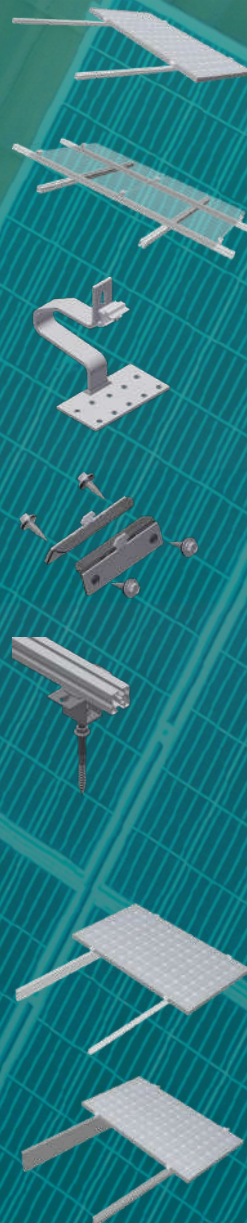
FIXING SYSTEMS SHEET METAL ROOF

SPECIAL FASTENING SOLUTIONS

## ELEVATED MOUNTING

FIXZ-7

FIXZ-15





The background features a collage of images: solar panels in the top left, roof tiles in the middle left, and a grid pattern in the bottom left. A large orange diagonal stripe runs from the top left towards the bottom right. A teal geometric shape, resembling a stylized roof or a triangle, is positioned in the upper right quadrant.

# **ROOF- PARALLEL OR ELEVATED MOUNTING – FOR ANY ROOFING AND PITCH**

There are countless combinations for pitched roofs. Different roof shapes, pitches and roofing often make the installation of a solar system an individual challenge. Due to the extensive range and modular structure of our systems we are able to plan a solar power plant on practically every pitched roof using all PV modules currently on the market.

# BALLASTED OR FASTENED – FOR ANY STATICS

Schletter flat roof systems are especially quick and easy to mount and can be adapted to all structural and construction conditions. Our structural engineers calculate the optimum design for your roof, taking into account the applicable building regulations as well as local wind and snow loads, to ensure that loads are optimally spread over the supporting structures and the reserve load capacity is not exceeded.

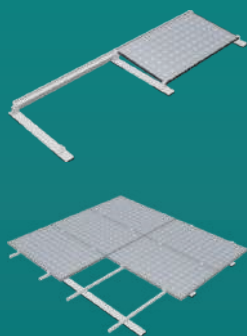
We minimize the number of roof penetrations required for fastened systems by intelligent planning and ensure that your roof remains permanently leak proof.







## BALLAST OPTIMIZED SOLUTIONS



FIXGRID18

FLATGRID

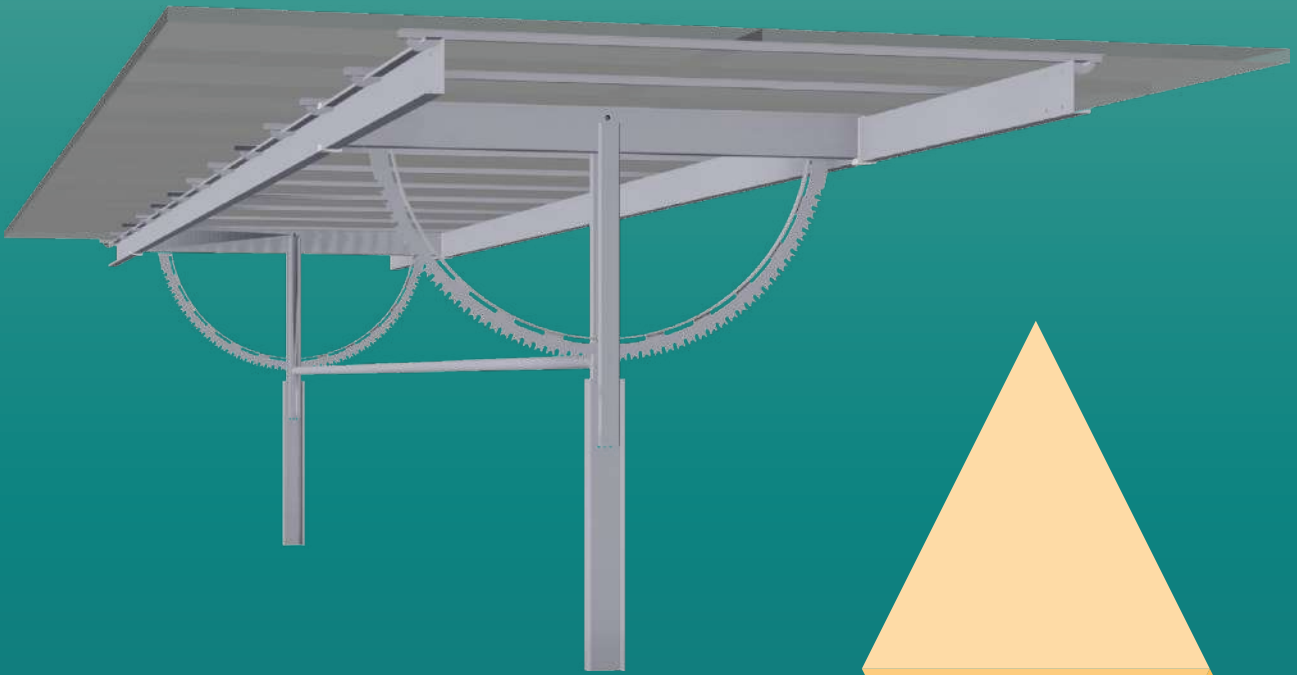
SUPPORT SYSTEMS

## FASTENING TO THE SUBSTRUCTURE



ISOTOP

SUPPORT SYSTEMS



### KEY FEATURES AND ADVANTAGES

- 2 modules vertical or 4 modules horizontal
- Highest ground cover ratio (GCR>50%)
- Free passage between the tracker rows
- Self-locking at any post in any position
- No galloping effect due to structural concept
- No dampers required
- Self-powered system / wireless communication / no cabling for controller and motor required
- Easy installation due to pre-assembled components

# AS STABLE AS A FIXED TILT

The Schletter Tracking System combines the advantages of the highest ground cover ratio (GCR) on the market with our unique and patented design principle of mechanical self-locking at any post in any position.

This gives the system the stability of a fixed tilt system and makes it resistant to aeroelastic phenomena, especially the galloping effect.





**EXPERTISE  
FROM A TO Z:  
PLANNING,  
DESIGN AND  
CONSTRUCTION  
FROM A SINGLE  
SOURCE**





Mounting a photovoltaic system requires more than a mere metal clamp. It needs a plan that has been thoroughly thought through and adapted to suit actual circumstances. It starts with initial soil or structural analyses and ends with tightening the very last screw.

We accompany our customers through the entire process. With our uncompromising quality standards at every stage of the project, we ensure that our top-quality products and solutions reach their full potential.

This care and our holistic approach are an integral part of our company's DNA.

## GERMANY

SCHLETTER SOLAR GMBH  
Alustraße 1  
83527 Kirchdorf  
[info.de@schletter-group.com](mailto:info.de@schletter-group.com)

## AUSTRALIA

SCHLETTER AUSTRALIA PTY LTD  
Unit 4, 27 Williamson Road  
NSW 2565 Ingleburn  
[info.au@schletter-group.com](mailto:info.au@schletter-group.com)

## CANADA

SCHLETTER CANADA INC.  
3155 Howard Ave, Suite 202  
Windsor, ON N8X 4Y8  
[info.ca@schletter-group.com](mailto:info.ca@schletter-group.com)

## CHINA

SCHLETTER (SHANGHAI) SOLAR  
TECHNOLOGY CO. LTD.  
No.1399 Xindian Road, Jiading District  
Shanghai, 201807  
[info.cn@schletter-group.com](mailto:info.cn@schletter-group.com)

## JAPAN

SCHLETTER JAPAN K.K.  
201, 3-8-8 Shin-Yokohama,  
Kouhoku-ku, Yokohama-shi, Kanagawa, 222-0033  
[info.jp@schletter-group.com](mailto:info.jp@schletter-group.com)

## SOUTH AFRICA

SCHLETTER SOLAR (SOUTH AFRICA) (PTY) LTD  
Unit F4, Pinelands Business Park, New Mill Rd,  
Pinelands, Cape Town, 7430  
[info.za@schletter-group.com](mailto:info.za@schletter-group.com)

## SPAIN

SCHLETTER ESPAÑA S.L.  
Poligono Industrial Cañada de Praes  
C/ Pintores 23  
03191 Pilar de la Horadada (Alicante)  
[info.es@schletter-group.com](mailto:info.es@schletter-group.com)

## TURKEY

SCHLETTER ENERJI VE ÜRETİM LTD.STI  
Kücükbakkalköy Mah. Dudullu Cd.  
No: 23-25 Brandium Residence R-2 K:13 D:124  
34746 - Atasehir / Istanbul  
[info.tr@schletter-group.com](mailto:info.tr@schletter-group.com)

## USA

SCHLETTER NA INC  
5200 77 Center Drive Suite 250  
Charlotte, NC 28217  
[info.na@schletter-group.com](mailto:info.na@schletter-group.com)

[www.schletter-group.com](http://www.schletter-group.com)